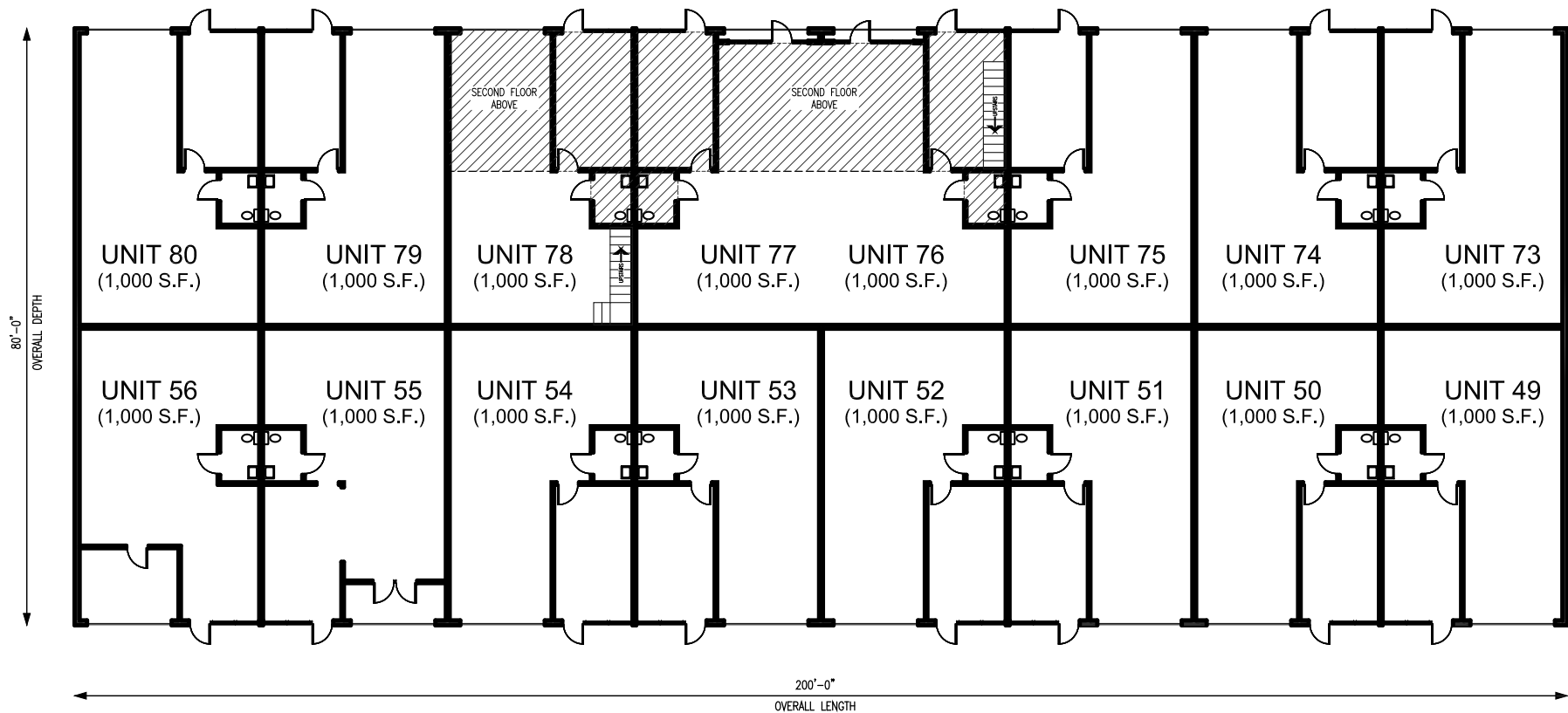


Key Features:

- * Multi-Use Flex Space
- * 12' High Steel Roll-Up Doors
- * Central A/C Installed In Each Unit
- * Office With Glass Store Front
- * Durable Steel Frame and Steel Roof Construction
- * Large Awning with Sign Area Over All Units
- * 3 Phase Electric Available
- * 5" Thick High Strength Concrete Floors

ATLANTIS
Industrial & Business Park
2323 N. State Street, Bunnell FL
(386) 437-4111

Building D



FLOOR PLAN